



Affiliated Real Estate Group

Land for Sale

Bayfield, Colorado

Available: 12.7 Acres

Price: TBD

Price / Sq Ft: TBD

Address: NE Corner
HWY 160 & CR 501
Bayfield, CO 81122

Location: Located on the NE Corner of Highway 160 & County Road 510, 18 miles East of Durango, CO.

Lot Size: 12.70 Acres - 553,212 sq ft

Access: County Rd 501
Bayfield Center Drive

Zoning: AG - (Re-zoning in Process)

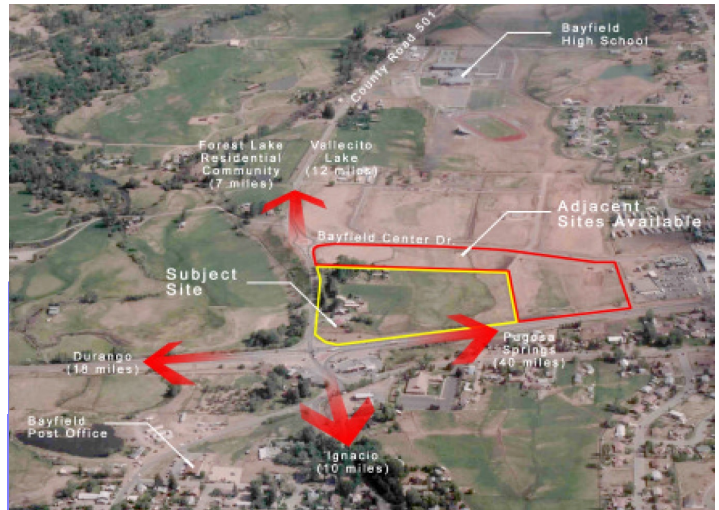
Utilities: On Site

Site Features: Located in the Heart of Bayfield
Highly visible NE corner of main
Crossroad Intersection

For more information on this Property, please visit our

Web page:

www.AREGCO.com



Offered By: G. Kirby Ross
Affiliated Real Estate Group, LLC
19590 E Mainstreet, #107
Parker, CO 80138
Phone: 303-805-1000, Ext. 14
Fax: 303-841-9730
E-mail: kirbyross@aregcolorado.com

© Affiliated Real Estate Group, LLC - We obtained the information above from sources we believe to be reliable. However, we have not verified its accuracy and make no guarantee, warranty or representation about it. It is submitted subject to the possibility of errors, omissions, change of price, rental or other conditions, prior sale, lease or financing, or withdrawal without notice. We include projections, opinions, assumptions or estimates for example only, and they may not represent current or future performance of the property. You and your tax and legal advisors should conduct your own investigation of the property and transaction.