



Affiliated Real Estate Group

Land for Sale

Elizabeth, Colorado

Available: 296 Acres

Price: \$2,220,000
- \$7,500 per Acre

Address: 988 State Hwy 86
Elizabeth, CO 80107

Residential / Commercial Potential

Location: Located just east of the town of Elizabeth on the South side of State Highway 86.

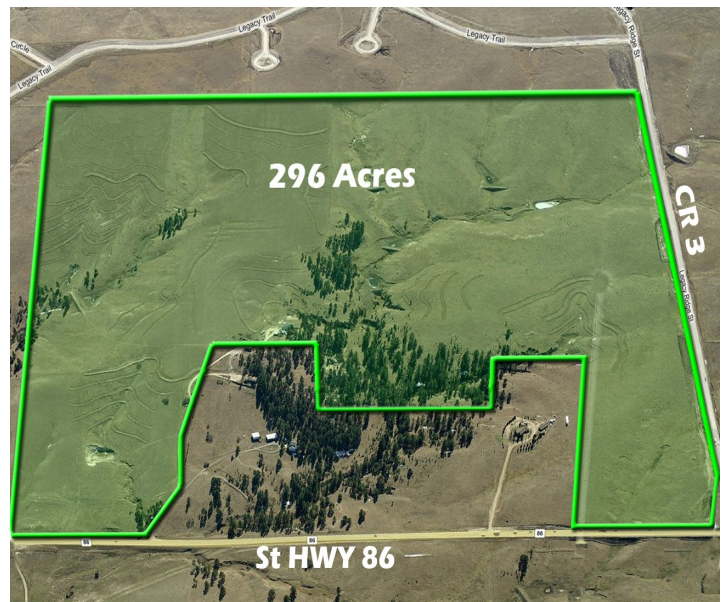
Lot Size: TBD

Access: Hwy 86 and CR 3

Zoning: AG

Water Rights: 500 Acre Feet

Site Features: Fronts State Hwy 86
1/2 mile West of new Super Wal-Mart
1 mile West of town of Elizabeth
Rolling hills, trees, & ponds



For more information on this Property, please visit our

Web page:

www.AREGColorado.com



Offered By: G. Kirby Ross
Affiliated Real Estate Group, LLC
19590 E Mainstreet, #107
Parker, CO 80138
Phone: 303-805-1000, Ext. 14
Fax: 303-841-9730
E-mail: kirbyross@aregcolorado.com